

CVP-2, Centrifuge/Vortex for PCR plates

DESCRIPTION

After many years of Combined Centrifuge/Vortex concept success, we are proud to introduce the long awaited Centrifuge/Vortex for PCR plates, **CVP-2**, to the sample preparation market.

The Spin–Mix–Spin technology is intended to spin-down micro volumes of reagents on the well's bottom (first centrifugation spin), following mixing (mix) and spin-down the reagents again from the walls and cap of the well (second spin). We named this repetitive algorithm of operation that is aimed at reducing the mistakes during sample preparation for PCR analysis a “sms–algorithm”. This algorithm is registered by Biosan.

CVP-2 is a fully automatic device for reproducing sms–algorithm for 2 PCR plates at the same time, thus saving time considerably. A must-have instrument for PCR and DNA analyses laboratory.

CVP-2 is 4 devices combined in 1:

1. Centrifuge — Maximum RCF: $245 \times g$ (1500 rpm)
2. Vortex (300–1200 rpm; Vortexing regulation timer 0–60 sec)
3. Centrifuge/Vortex
4. SMS–cyclor for realization of the “sms–algorithm”

Plate type:

Without adapter:

96-well skirted PCR plates, PCR strips in a frame;

With adapter **AP-96***:

96-well semi-skirted and non-skirted PCR plates;

With adapter **AP-384***:

384-well PCR plates;

* - Adapters are made of Ertacetal® C. Autoclavable

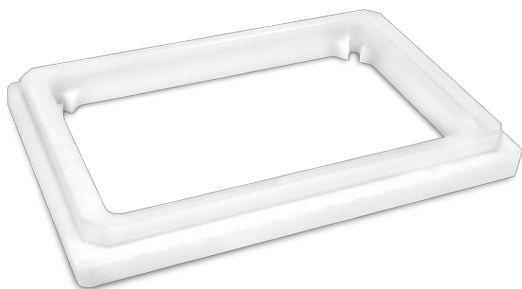


CAT. NUMBER

Including adapters AP-96	Including adapters AP-96
BS-010219-A02	100-240VAC 50/60Hz Euro plug
BS-010219-A03	100-240VAC 50/60Hz UK plug
BS-010219-A04	100-240VAC 50/60Hz AU plug
BS-010219-A05	100-240VAC 50/60Hz US plug
BS-010219-FK	IQ OQ document
BS-010219-GK	PQ document

SPECIFICATIONS

Speed regulation range	300–1500 rpm
Min. RCF at 1500 rpm	175 x g
Vortex regulation range	300–1200 rpm
Setting resolution	100 rpm
Display	LCD, 2 x 16 signs
Centrifugation mode time range	0–30 min (increment 1 s; after 1 min - 1 min)
Vortex mode time range	0–60 sec (increment 1 sec)
Number of cycles	1-999
Chamber diameter	210 mm
Overall dimensions (W×D×H)	285 × 350 × 190 mm
Weight	6.15 kg
Input current/power consumption	12 V, 1.5 A / 18 W
External power supply	Input AC 100–240 V 50/60 Hz; Output DC 12 V



AP-96
BS-010219-DK
adapter

2 adapters for 96-well semi-skirted and non-skirted PCR plates - made of Ertacetal® C. Autoclavable



AP-384
BS-010219-EK
adapter

2 adapters for 384-well plates - made of Ertacetal® C. Autoclavable